

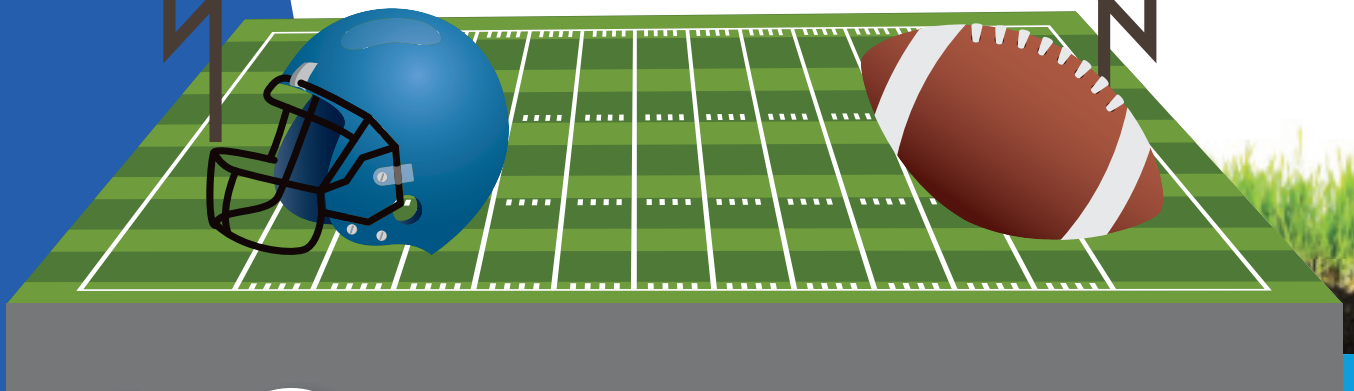


# National Safe Digging Month

Western Midstream™

[www.westernmidstream.com](http://www.westernmidstream.com)

# Connect the Dots



**DID YOU  
KNOW?**

There are more than **100 billion** feet of underground utilities in the USA. That's more than one football field's length of buried utilities for every person.

# Word Search

I L Y E L L O W R P F L A G  
O E L T R T A E P F H R E E  
W R I A I A T B L U E O A O  
A H I S C A D E R T P L L E  
E A I N W N E E R G T V E E  
O T H T L A N D S C A P E S  
N G R E E P U R P L E K T A  
P A F E R E E W O R K E R F  
I S C C E T P I V G C O A E  
N C G E A O L G N A I L A T  
K P G C D I G G I N G P H Y  
E Y O L R L I S S H O V E L  
D L C I A E I V E A L E T C  
C O N S T R U C T I O N G L

CALL

BLUE

CONSTRUCTION

DIGGING

FLAG

GAS

GREEN

HOLE

LANDSCAPE

LOCATE

PINK

PURPLE

RED

SAFETY

SHOVEL

TREE

WATER

WHITE

WORKER

YELLOW

# Call **BEFORE** You Dig

Before you start your project, it is important to call 8-1-1 so locators can mark your property to prevent a disruption in utility services. Knowing the location of lines and what the color of the flags means will give you a better appreciation for damage prevention prior to your home project.



## PINK

**Temporary survey markings:** These flags are placed to help surveyors avoid mistakes that could possibly turn into injuries.

## RED

**Electric power lines, cables, conduit or lighting cables:** These are your home's power lines, which connect to your neighborhood's power grid.

## WHITE

**Proposed excavation:** For your project, workers will mark where you plan to dig. When you see white flags in your community, the city is most likely about to begin its own excavation.

## YELLOW

**Gas, oil, steam, petroleum or gaseous materials:** These markers help you stay away from gas lines, which, if hit, could cause gas leaks resulting in soil contamination or even an explosion.

## ORANGE

**Communications, alarm or signal lines:** These are cables that indicate the system controlling your home's telephone and television access.

## BLUE

**Water, irrigation and slurry lines:** If damaged, these lines could flood your house and potentially cause water damage to your neighbors.

## PURPLE

**Reclaimed water, irrigation and slurry lines:** Recycled water used for landscape irrigation. The lines normally run into a city line.

## GREEN

**Sewers and drain lines:** These lines are on a neighborhood and city level network and eventually dump into the nearest body of water.

# How MANY?

Count each color of flags on this page and write the number in the box.



## DIRT DIGGING PUDDING CUPS

1 package of instant chocolate pudding

2 cups of milk (cold)

8 ounces whipped topping

1 1/2 cups sandwich cookies, crushed

Gummy worms

1. Whisk together milk and pudding mix for 2 minutes. Let stand for 5 minutes.
2. Stir in whipped topping and 1/2 cup of crushed cookies.
3. Spoon mixture into cups.
4. Sprinkle remaining crushed cookies over the mixture.
5. Top with desired amount of gummy worms.
6. Chill until serving, then dig in!



## CONSTRUCTION AREA SNACK BAR

Put on your safety gear and chow down on these edible construction materials.



NUTS & BOLTS



PIPELINES



SHOVELS



GRAVEL



2 BY 4'S



BOULDERS



## KID-FRIENDLY DIRTY RICE

4 sausage links, sliced

1/2 red pepper, diced

1/2 green pepper, diced

1 onion, diced

1 tbsp seasoned salt

2 cups of rice

4 cups chicken broth

*Optional: beans, scallions, chopped celery*

1. Saute sausages for a few minutes until it is lightly browned.
2. Add onions and peppers
3. Continue to saute until onions are translucent.
4. Add seasoned salt and stir to combine.
5. Add rice and saute for a minute or two.
6. Add broth, cover and bring to a boil.
7. Lower heat. Simmer for 20 minutes.



1. Outline the shape below on your sidewalk or fence with tape.
2. Solve the math problems.
3. Shade in the section with the matching color to the number solved.
4. Peel off the tape carefully.
5. Take a picture of your art.
6. Share it with your neighbors and on your social media.

# CHALK ART!

1	1	1	1
1	6	6	6
1	6		
1	6		
1	6		
1	6		
1	6	6	6
1	1	1	1

3	3	3	4	4
3	3	3	4	4
3	3		4	4
3	3		4	4
3	3	4	4	4
3	3	4	4	4
3	3		4	4
3	3		4	4

8	2		
8	2		
8	2		
8	2		
8	2		
8	2		
8	2	2	2
8	8	8	8

1	5		
1	5		
1	5		
1	5		
1	5		
1	5		
1	5	5	5
1	1	1	1

8	8	8	8	8	8	8	8
8	5	5	5	5	5	5	8
8	5					5	8
8	5					5	8
8	5	5	5	5	5	5	8
8	5	5	5	5	5	5	8
8	5					5	8
8	5					5	8
8	5	5	5	5	5	5	8
8	8	8	8	8	8	8	8

2	2	3	3
2	2	3	3
2	2	3	3
2	2	3	3
2	2	3	3
2	2	3	3
2	2	3	3
2	2	3	3
2	2	3	3
2	2	3	3

6	6	4	4
6	6	4	4
6	6	4	4
6	6	4	4
6	6	4	4
6	6	4	4
6	6	4	4
6	6	4	4
6	6	4	4
6	6	4	4

$2 \times 2 = \underline{\quad}$

PINK

$9 - 6 = \underline{\quad}$

RED

$22 - 14 = \underline{\quad}$

GREEN

$3 \times 2 = \underline{\quad}$

BLUE

$10 \div 2 = \underline{\quad}$

ORANGE

$7 - 6 = \underline{\quad}$

PURPLE

$8 \div 4 = \underline{\quad}$

YELLOW





# Let's go for a **SAFETY CHECK!**

Hunt in your neighborhood for items that start with each letter below. Write your finding in the space provided.

D \_\_\_\_\_  
I \_\_\_\_\_  
A \_\_\_\_\_  
L \_\_\_\_\_

B \_\_\_\_\_  
E \_\_\_\_\_  
F \_\_\_\_\_  
O \_\_\_\_\_  
R \_\_\_\_\_  
E \_\_\_\_\_

Y \_\_\_\_\_  
O \_\_\_\_\_  
U \_\_\_\_\_  
D \_\_\_\_\_  
I \_\_\_\_\_  
G \_\_\_\_\_



# 5 STEPS FOR SAFE DIGGING

Contact us at

[pipelinesafety@westernmidstream.com](mailto:pipelinesafety@westernmidstream.com)

for more information about  
Western Midstream and the  
pipelines in your area.



Western Midstream™

- 1 Notify:** Call 8-1-1 or make a request online before you begin your project.
- 2 Wait:** Wait two-to-three days for utilities to respond to your request. Underground utility lines will be marked.
- 3 Confirm:** Confirm your request by comparing the markers to the list of utilities the 8-1-1 hotline notified.
- 4 Respect:** Respect the markers as they are your guide for the duration of your project.
- 5 Dig Carefully:** Move your project locations if you can't avoid digging within 18 to 24 inches of the markers.



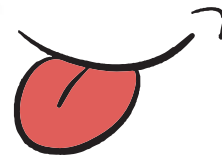
Know what's below.  
Call before you dig.

## Safety is No Laughing Matter!

*But, these jokes will give you a giggle.*

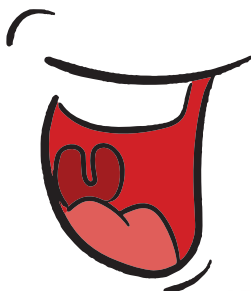


The shovel was such a great invention.  
It was truly groundbreaking.



This coffee tastes like dirt!

What did you expect? It was  
ground this morning!



How much dirt is in  
a 12 x 6 x 3 hole?

None. It's a hole.

